



熔喷生产设备

MELT BLOWN PRODUCTION EQUIPMENT

可根据客户需求进行定制

Customizable to customer needs

- 可设计, 制造整套熔喷设备
- 可对应纳米纤维·混纤·芯鞘等
- 可对应以下树脂原料

PP (聚丙烯), PE (聚乙烯), PET (聚对苯二甲酸乙二醇酯), PBT (聚对苯二甲酸丁二醇酯), PA6 (聚酰胺6), PLA (聚乳酸) TPU (热塑性聚氨酯) 等
※特殊原料, 添加剂等, 以及最终产品非无纺布的情况, 请来函咨询。

- Design and manufacture melt blown equipment unit
- Meeting the needs of nanofibers, combined fibers, and sheath and core
- Compatible with various polymers as below
PP (Polypropylene), PE (Polyethylene), PET (Polyethylene terephthalate), PBT (Polybutylene terephthalate), PA6 (Polyamide6), PLA (Polylactic acid), TPU (Thermoplastic Polyurethane) and others
※Please feel free to contact us for products other than non-woven fabric, such as special polymers (materials) and polymer with additives.

**Japan
Quality**

Made in Japan



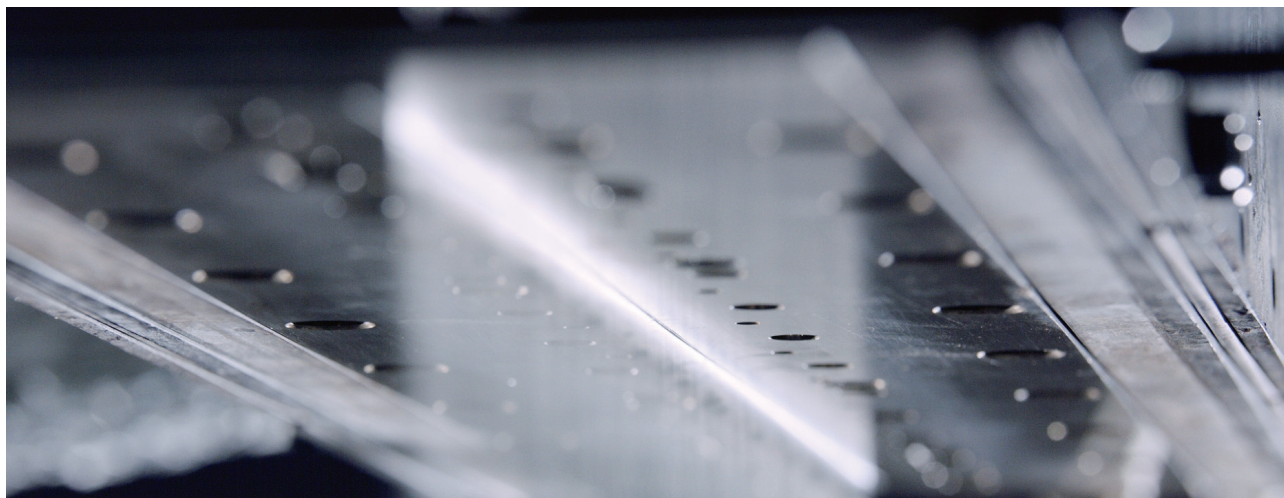
中文

关于产品详情请扫描二维码确认

Please confirm the products detail from QR code



ENGLISH



熔喷无纺布生产试验

NON-WOVEN FABRIC MANUFACTURING TEST

支持产品开发和设备引进前的验证

Supportable to products development and validation
before installation of equipment

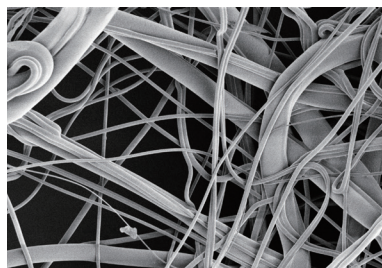


熔喷无纺布的纤维扩大照片

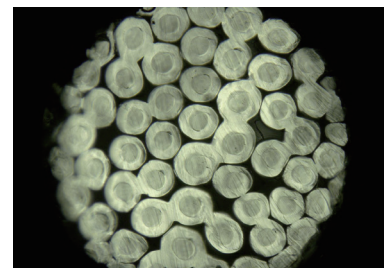
The photo of Melt Blown Non woven fiber under the microscope.



纳米纤维
Nanofibers



混纤(粗 / 细)
Combined fibers(Thick / Fine)



芯鞘纤维
Sheath and Core fibers

通过大小3台设备, 可对应纳米纤维, 混纤, 芯鞘等复合熔喷纺丝。

We can provide testing support of nanofibers, combined fibers, and sheath and core by
3 different type of Melt blown equipment in-house.



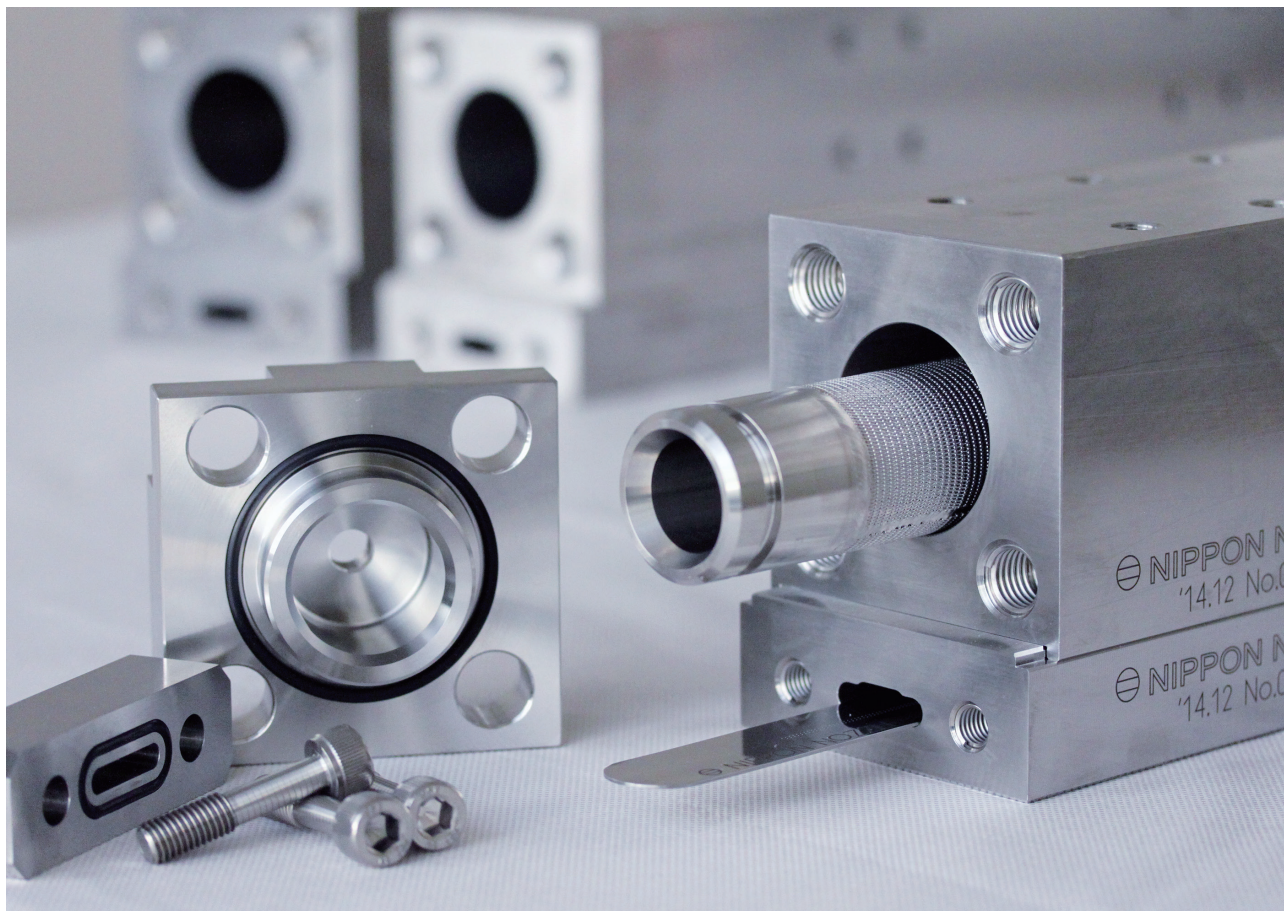
中文

关于产品详情请扫描二维码确认

Please confirm the products detail
from QR code



ENGLISH



水刺头 SPUNLACE INJECTOR

在整个宽度上可实现出色的水流分配性能

**Best performance, even water distribution
by Nippon designed Injectors.**

- 内压密封结构的简单设计
- 可简单更换喷丝板及过滤芯
- 通过精巧的设计,可减少维护时间,降低成本
- Perfect sealing by internal pressure.
- Design to quick removal jetstrip and filter parts
- Reduce cost by compact and easy to maintenance structure



中文

关于产品详情请扫描二维码确认

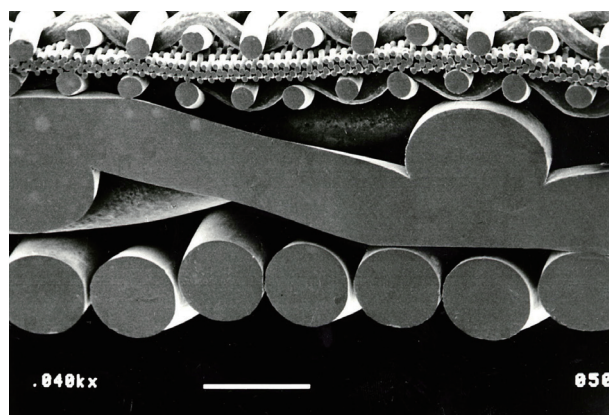
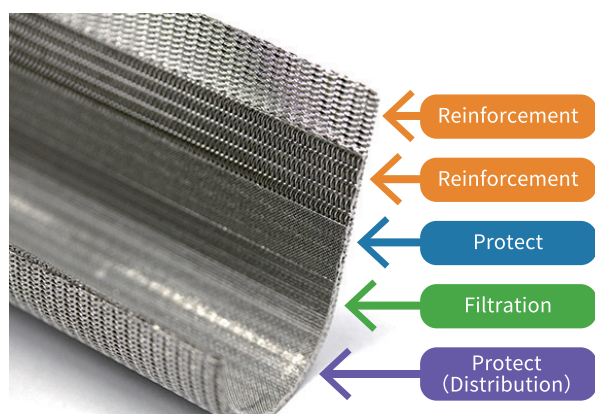
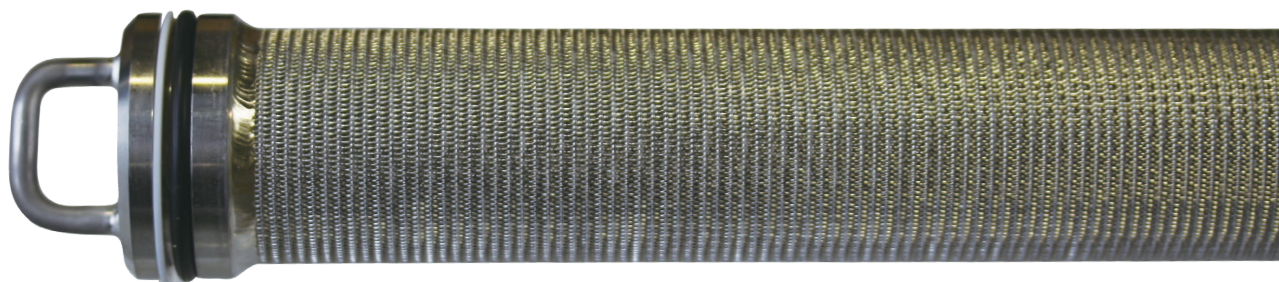
Please confirm the products detail
from QR code



ENGLISH

**Japan
Quality**

Made in Japan



过滤芯

SPUNLACE CARTRIDGE FILTER

通过耐用高效的过滤芯降低生产成本

**Fine durability filter,
bring good advantage on your production.**

**Japan
Quality**

Made in Japan

- 通过 5 层筛网“烧结”，实现无错位的高精度过滤
- 通过保护层·过滤层·加固层的 3 种组合，实现高耐久性
- 通过定期清洗，可反复使用，降低成本
- 通过 5 层滤网，有助于有效且均匀地分配水流
- Combine by "Sintering" 5-layer mesh to made high precision filtration
- Achieve product's durability by three function layers: protection, filtration and reinforcement.
- Could be repeatedly use by proper and regular cleaning.
- 5 layers filters mesh make positive effect on distribution of water flow.



中文

关于产品详情请扫描二维码确认

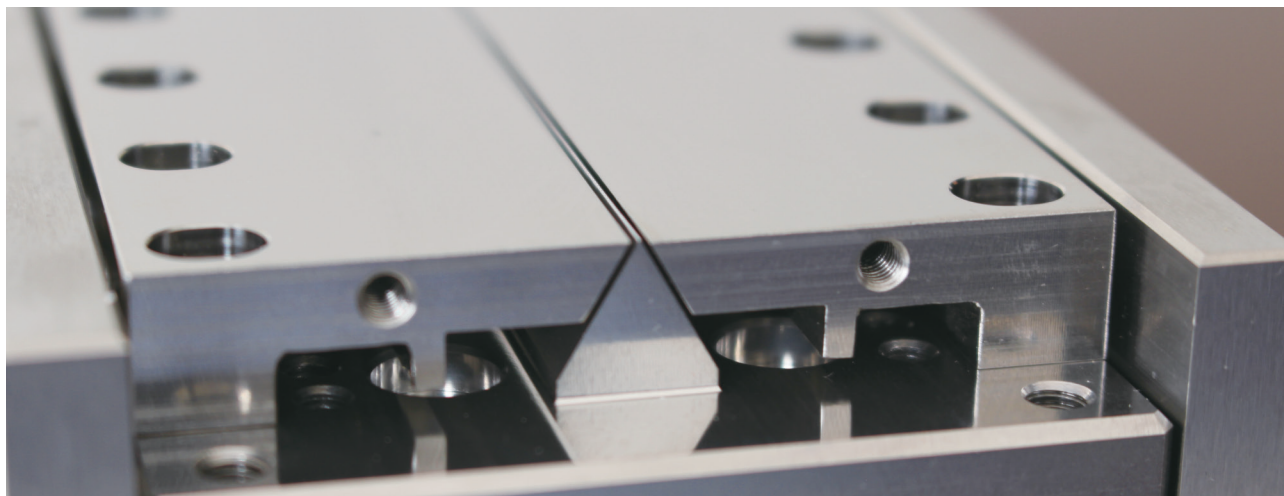
Please confirm the products detail
from QR code



ENGLISH

Nippon Nozzle Co.,Ltd. 1-1,2-chome Murotani, Nishi-ku Kobe 651-2241,JAPAN

TEL +81-78-991-6821 (Sales Dept) / FAX +81-78-991-6833 / MAIL inq@nippon-nz.com



熔喷喷丝板 MELT BLOWN SPINNERET

**Japan
Quality**

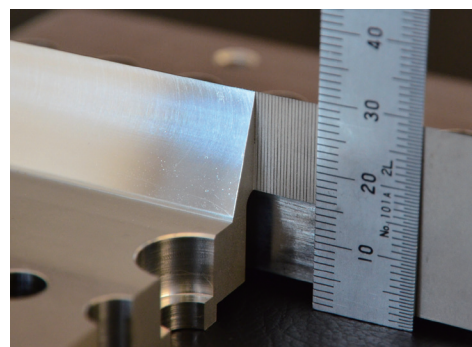
Made in Japan

可实现类似纳米纤维等高长径比的孔加工

Realization of high aspect ratio hole processing
to Nano size fibers

- 喷丝板制造商独有的高精度孔加工
- 可实现高长径比(30~100倍)的加工
- 可实现最小孔径 $\Phi 0.08\text{mm}$ 的加工
- 通过窄间距设计和制造可提高产量
- 可根据树脂原料的特性提案孔径及规格
- 从风刀的角度到孔径·孔长可定制
- 可灵活利用自有 MB 试验线的经验·业绩进行设计
- 完善的维修服务(有偿服务)

- High precision processing that only spinneret manufacturer specially has
- Realization of high aspect ratio(30~100times)
- Realization of the small-diameter hole $\Phi 0.08\text{mm}$
- The production capacity can be increased by narrow pitch designed and manufacturing
- Possible to propose hole diameters and specifications that match the characteristics of the polymer
- Customizable from air lip angle to hole diameters, hole length
- Utilize the experience and achievements of an in-house MB tester for design
- Maintenance service and Repair service(Compensation for a fee)



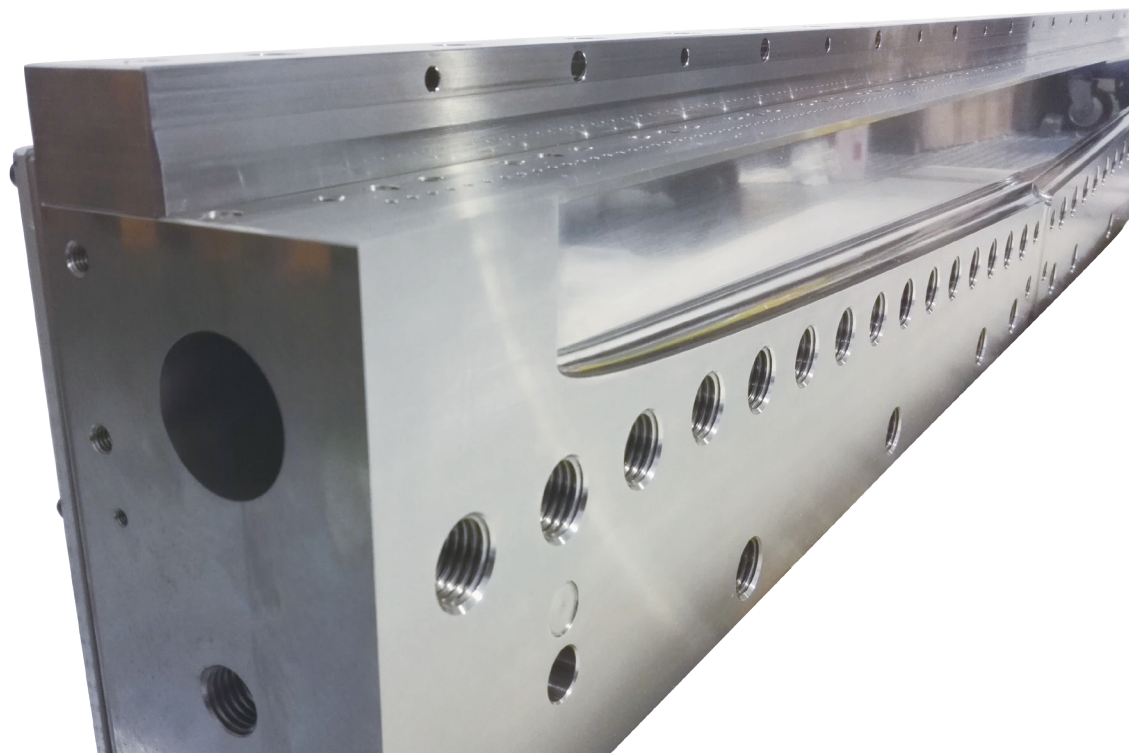
中文

关于产品详情请扫描二维码确认

Please confirm the products detail
from QR code



ENGLISH



模头

HIGH PERFORMANCE T-DIE

可根据树脂原料的特性进行各种提案

Possible to propose specifications
that match the characteristics of the polymer

**Japan
Quality**

Made in Japan

- 喷丝板制造商独有的高精度孔加工
- 聚合物流道上的表面光洁度精加工
- 通过独自的设计理念来实现精巧设计
- 可灵活利用自有 MB 试验线的经验・业绩进行设计
- 可通过流体分析模拟聚合物流动(有偿服务)

- High precision processing that only spinneret manufacturer specially has
- Smooth surface finish on polymer flow passage
- Compact structure designed by own tools
- Utilize the experience and achievements of an in-house MB tester for design
- Possible to simulate of polymer flow on flow analysis software(Compensation for a fee)



中文

关于产品详情请扫描二维码确认

Please confirm the products detail
from QR code



ENGLISH



水针板 SPUNLACE JETSTRIPS



实现水流的高均匀性和高直进性

Achieves high quality, straight and uniform water flow.

- 提供世界顶级份额的高性能水针板
- 在品质 · 价格 · 交货期方面, 追求完美
- 产生长柱状(无湍流的水流)水流的同时, 可形成高缠绕性, 对产品的加工损耗, 电力, 水量的节能起到改善效果。
- Has the world's top market share by providing high performance Jet strips
- High quality, short delivery and reasonable price
- With longer columnar of water flow (without turbulence), it brings a positive impact on high entanglement performance and reduces processing loss at your production site. The saving of energy and water consumption can also be expected.



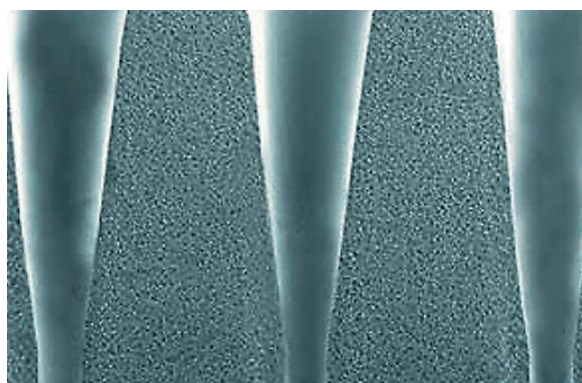
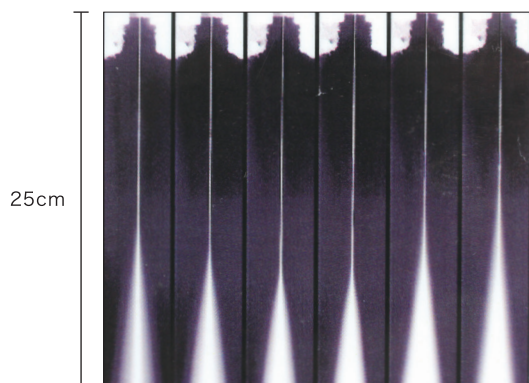
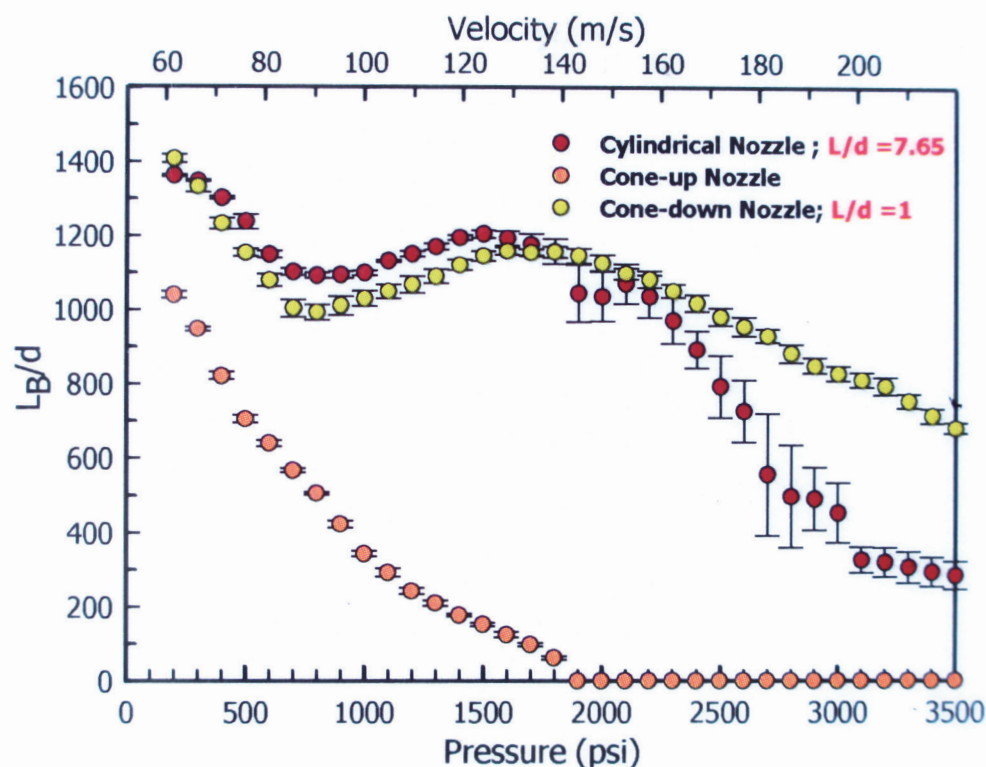
中文

关于产品详细请扫描二维码确认

Please confirm the products detail
from QR code



ENGLISH



- 材质 / SUS316、SUS631、NN50、NN01 etc.
- 孔形状 / 圆孔
- 全长 / 7000mm(加工可能范围)
- 生产产品目 / 纸巾、电子擦拭布、化妆用品、手术袍、人工皮革、面膜等

- Materials / SUS316、SUS631、NN50、NN01 etc.
- Hole shape / Round hole
- Total length / 7000mm(Length of hole area)
- Product Application / Wet wipes, Disposable paper wipes, cosmetics, surgical gown, artificial leather, face mask, etc.

Nippon Nozzle Co., Ltd.

1-1,2-chome Murotani,
Nishi-ku Kobe 651-2241, JAPAN
TEL +81-78-991-6821 (Sales Dept)
FAX +81-78-991-6833
MAIL inq@nippon-nz.com



纺丝喷丝板 SPINNERETS

提供世界最高品质的各种纺丝用喷丝板
Providing all kinds of spinning spinnerets
with best quality in the world!

**Japan
Quality**
Made in Japan

湿法喷丝板

通过我们独特的加工技术挑战产品的极限。
最小孔径 $\Phi 0.016$ 加工可能。
单个喷丝板最大孔数 10 万孔以上加工可能。

Wet Spinnerets

Challenge the limitation of the products-by our unique processing technology. We achieve to processed minimum $\Phi 0.016$ size of holes. In one spinneret allows maximum 100,000 holes or even more.



中文

关于产品详情请扫描二维码确认

Please confirm the products detail from QR code



ENGLISH

干法喷丝板

即使对孔加工要求最高的干法喷丝板，也能安定供给。
对于追求差异化产品的开发，会提供相应的技术支持。

Dry Spinnerets

Supply spinnerets with the stable and highest quality of holes. We cooperate with clients in research and develop new spinnerets to make differentiated products.



中文

关于产品详情请扫描二维码确认

Please confirm the products detail from QR code



ENGLISH

干湿法喷丝板

通过高超的加工精度来实现孔品质的均匀性。通过孔的均匀性最低限度抑制纤度的不稳定性，进而支持纤维的高强度，高弹性。

Air-Gap Spinnerets

Achieves uniform hole and high quality by accuracy of processing. The uniformity fineness of holes can minimize unevenness on fiber; this achievement makes advantage, especially on high strength and high elasticity of product.



中文

关于产品详情请扫描二维码确认

Please confirm the products detail from QR code



ENGLISH

熔融喷丝板

可提供高耐腐蚀性功能原材料。
可进行超镜面孔边缘加工，以提高纤维的剥离性。

Melt Spinnerets

We provided spinneret in functional materials such as high corrosion resistance etc. It's possible to give a sharp edge around hole by super mirror surface processing which made advantage on thread separation from the spinnerets.



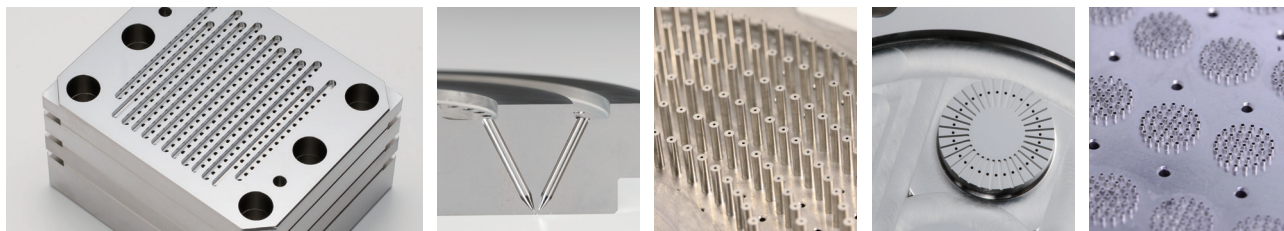
中文

关于产品详情请扫描二维码确认

Please confirm the products detail from QR code



ENGLISH



复合纺丝用喷丝板 CONJUGATE SPINNERETS

配合各种复合功能性纤维的开发

Manufacture and design conjugate spinning parts depended on your need

- 类似海岛·桔瓣等超细纤维的设计·制造
- 类似并列·芯鞘等功能性纤维的设计·制造
- 可进行异型孔同复合纺组合的设计·制造
- Ultra-fine micro fiber use Sea-island / Segmented-Pie Spinneret.
- Functional fiber use Side by side / Sheath core Spinneret.
- It's possible to Combine different shape of hole in conjugate spinning.



中文

关于产品详情请扫描二维码确认

Please confirm the products detail from QR code



ENGLISH

Japan
Quality

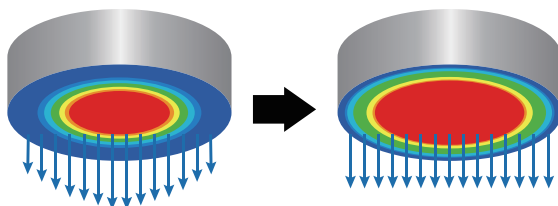
Made in Japan

纺丝用喷丝板组件设计·制造 DESIGN OF CONJUGATE SPINNING PACK

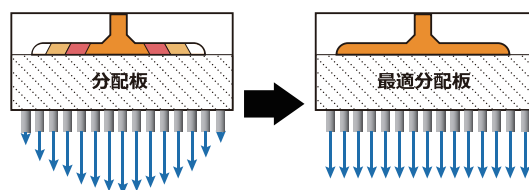
通过抑制断丝，纤度不均，提高产品的品质和改善生产性

To minimize yarn breakage, improve the products' uniformity and quality

- 通过增加孔数，改变排列的再设计，来实现安定纺丝，增加产量
- By increase hole amount, re-design hole arrangement to give a stable and maximum production capacity.



- 通过流道设计，温度控制的合理话设计，进而提高清洗频率时间，改善生产性
- By design the flow distribution and temperature control in the spinning pack, improve the pack life and extend cleaning cycle.



中文

关于产品详情请扫描二维码确认

Please confirm the products detail from QR code



ENGLISH

Nippon Nozzle Co.,Ltd.

1-1,2-chome Murotani,
Nishi-ku Kobe 651-2241, JAPAN

TEL +81-78-991-6821 (Sales Dept)

FAX +81-78-991-6833

MAIL inq@nippon-nz.com



日本喷丝板株式会社 Nippon Nozzle Co.,Ltd.

纤维的可能性极大化

Maximizing the possibitiy of the fibers

创业 Foundation

1928

事業内容

- 化学纤维, 高性能纤维用纺丝喷丝板及纺丝组件的设计制造销售
- 无纺布用喷丝板及设备的设计、生产及销售
- 熔喷无纺布、水刺无纺布等无纺布用生产设备的设计、生产及销售
- 各种过滤芯、过滤网的生产及销售
- 各种喷丝板清洗设备、清洗液的销售

Business description

- Design, Manufacture and Sales of spinneret for Synthetic fiber and High performance fiber and spinning pack
- Design, Manufacture and Sales of spinneret for non-woven fabric and unit
- Design, Manufacture and sales of Nonwoven production equipment for Melt blown and spunlace etc.
- Manufacture and sales for various filters
- Sales for cleaning equipment and detergent for spinnerets



中文

关于公司详细信息请扫描二维码

Please confirm company information
from QR code



ENGLISH

沿革/History



1928

运用精密零件加工的优势技术从一个钟表修理工厂开始起步
Start of business as a watch repair workshop
applying vthe precision parts processing technical.

Mar. in 1930

粘胶人造丝用喷丝板日本国产化成功
Initiation of the spinneret for viscose rayon
production as a pioneer in Japan

Apr. in 1932

同日本国内人造丝公司开始合作
Start of the business with domestic rayon manufacturers

Sep. in 1950

在神户市滩区中乡町设置本社工厂
Establishment of the main plant in
Nakago-cho,Nada-ku,Kobe City

Mar. in 1970

本社工厂迁移至神户市滩区篠原台，
扩大醋酸纤维用喷丝板生产
New headquarters settled in
Nada-ku Shinoharadai,Kobe City
Expansion of acetate spinneret
production



Oct. in 1978

扩大生产水针板
Start of the business with Spunlace Jetstrips production

Feb. in 1984

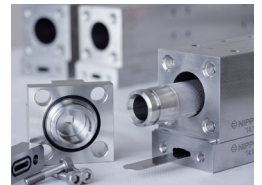
营业部从本社工厂分离,迁至神户三宫
Relocation of Sales Department to Sannomiya,
Kobe City separated from headquarters office and factory

Aug. in 1988

本社工厂及营业部迁至神户高新科技园区，
增加生产设备,同时开始生产纺粘、熔喷喷丝板。
New Headquarters and Sales Department
relocated to the Kobe High-Technology park,
Expansion of Spunbond and
Meltblown spinnerets production

Feb. in 1993

研究出新型节能型水刺头，
同时开始研发熔喷纺丝设备
Development to energy saving of
Spunlace holder and
Start of Meltblown device
research and development



Apr. in 2008

全股转让给中村超硬
成功开发出新型材料NN20水针板，
扩大生产船用燃料喷射器、
薄膜涂层喷丝板、纺丝组件等
Acquisition by
Nakamura Choukou Co.,Ltd. and
restructuring of the management
Development of Spunlace jet strip NN20 new materials
Expansion of production of marine fuel valves,
thin film coating spinneret, spinning packs



Dec. in 2010

取得ISO9001、ISO14001 认证体系
扩大生产超细纤维用窄孔距高长径比喷丝板
Certification of ISO9001 and ISO14001
Expansion of narrow pitch high L/D spinneret
production for micro and nano fibers

May.in 2014

着手研发自动纺丝喷丝板检测机 Red Scan
Initiation of the development and
sales of Automatic inspection
equipment (RED SCAN)



Jun. in 2017

增加湿法喷丝板生产设备静电纺丝
Increase the production facility for wet spinnerets production
Start of sales electrospinning device

Oct. in 2019

增加水针板生产设备
Increase the production facility for
Spunlace Jetstrips production